

MLLWP70LED50DS

LED WALLMAX - LARGE 70W WALL PACK: FULL CUTOFF



MaxLite's Wall Packs meet full cut off criteria established by the IESNA.

LED Module: An efficient, energy saving replacement for metal halide and high-pressure sodium fixtures. Contains an integral listed driver.

Fixture can mount to electrical box or direct to wall.

FEATURES:

- Replaces up to 250 Watt Metal Halide
- Lumen delivered 4400
- 69 Watts total consumed
- CCT 5000K
- 50,000 hour life at L70 standards
- Self-contained driver
- Universal 120V through 277V
- Maintenance free: no UV
- Dusk To Dawn / Occupancy sensor compatible
- Can mount on electrical box or direct to wall
- LM-79/80 data available
- 5 Year Limited Warranty
- 20W, 30W, and 40W models available
- Does not attract insects
- Design Lights

CONSTRUCTION:

Fixture: Heavy-duty cast aluminum one-piece housing; polyester powder coat paint; rust and corrosion proof. Fixture is sealed to be dirt and insect proof.

Lens: High quality tempered glass.

LED Module: Copper plating to provide high thermal transfer rate minimizing junction temperature of LED.

Finish: Dark Bronze or Textured White

Watts (Max)	Order Number	Model Number	Lumens	CRF	Lamp Life (hrs)	CCT	Dimensions (LxWxH)	Weight
70	71138	MLLWP70LED50DS	4400	63	50,000	5000	16.9" x 13.8" x 9.0"	5000
70	71132	MLLWP70LED50DSW	4400	63	50,000	5000	16.9" x 13.8" x 9.0"	5000

Lighting layouts and spacing criteria available upon request

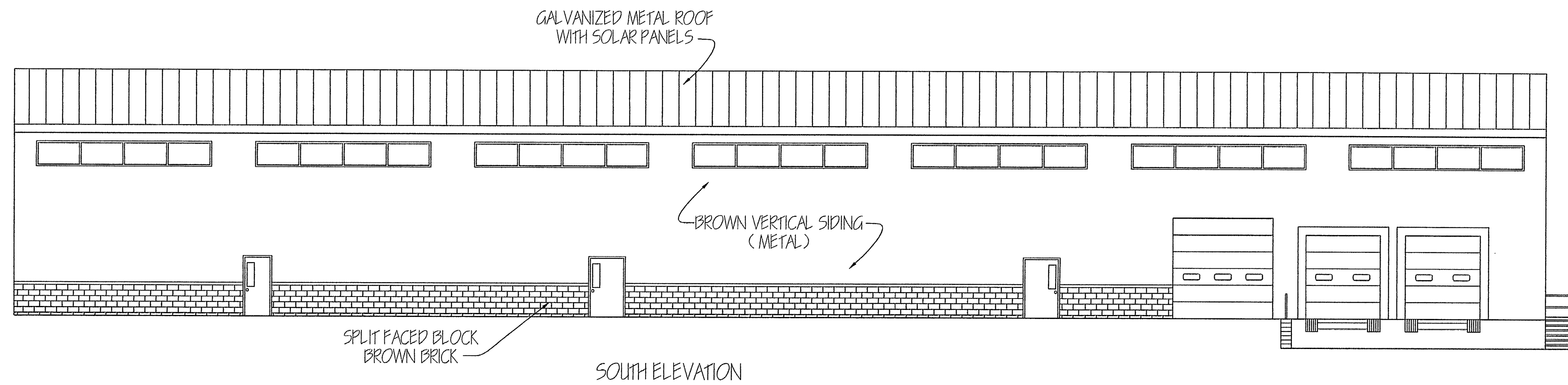
*Caution: This fixture is DLC compliant and designed for downward illumination only.

MaxLite®: 1-800-555-5629 | Fax: 973-244-7333 | Web: www.maxlite.com | E-mail: info@maxlite.com

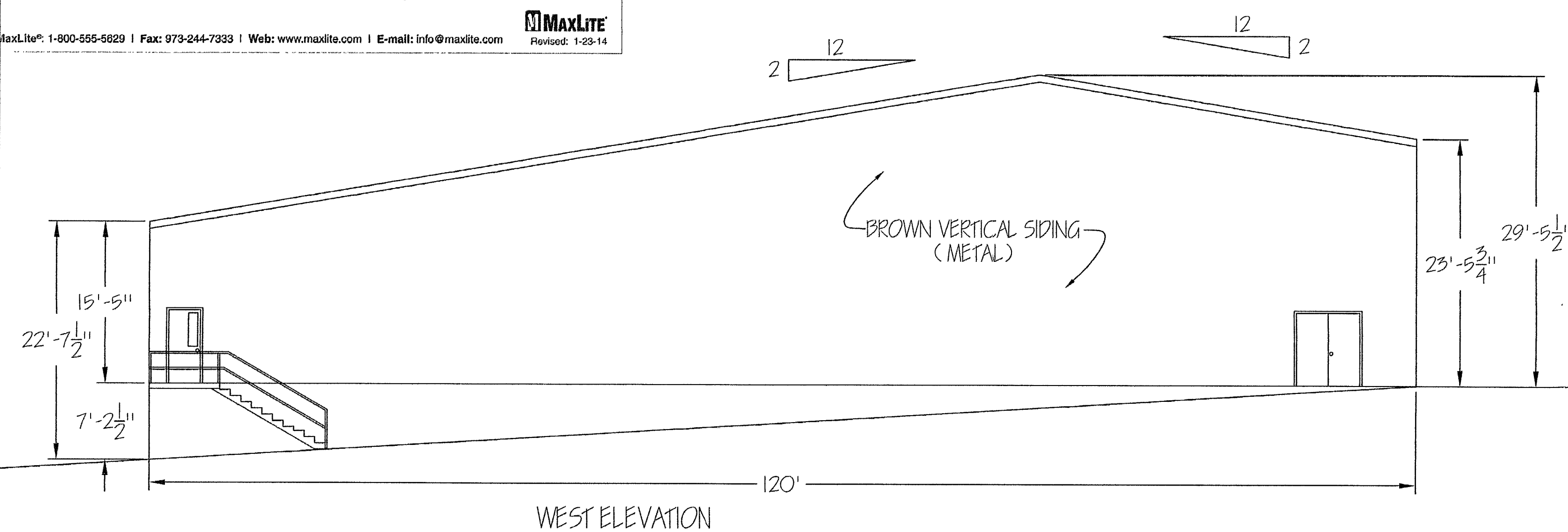
PROJECT NAME _____
 CATALOG NUMBER _____
 NOTES _____
 FIXTURE SCHEDULE _____



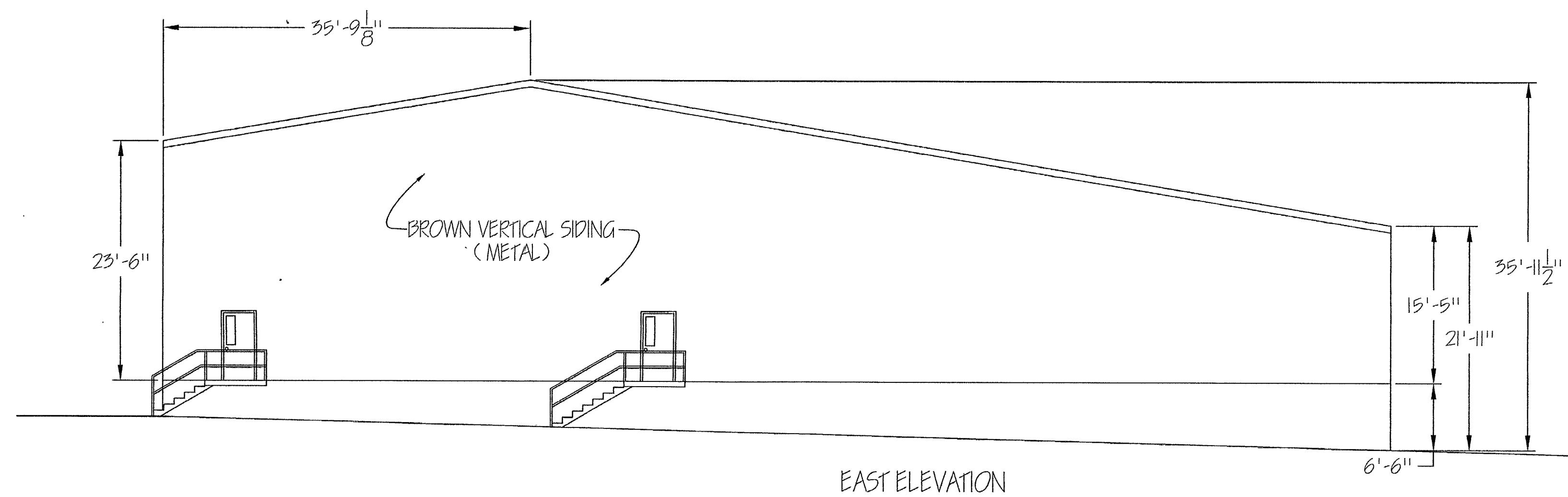
ASSEMBLED IN THE US



SOUTH ELEVATION



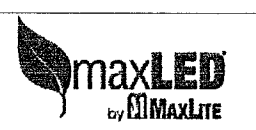
WEST ELEVATION



EAST ELEVATION

MLFL Large Flood Lights

LED Large Flood Light Series



An efficient, energy saving replacement for metal halide and high-pressure sodium fixtures, containing an integral listed driver, the LED Flood Light Series fixtures can be easily installed to a slip fitter.

The fixtures come standard with a 2-3/8" slip fitter adjustable knuckle in standard dark bronze; consult the factory for white finish.

FEATURES:

- Replaces up to 400 Watt pulse start metal halide
- CCT: 5000K
- CRI > 80
- Universal 100 to 277V, 50/60 Hz driver
- 2-3/8" slip fitter knuckle included
- NEMA 5x5 and 7x7 distributions available
- Black ceramic paint fill lens mask reduces glare and improves appearance
- Constructed without any hazardous materials
- Compatible with mechanical relay type Photocell and occupancy sensor
- LM-79/80 reports available
- 50,000 hour rated life at L70 standards
- Five year limited warranty

CONSTRUCTION:

Fixture: The heavy duty cast aluminum one-piece housing is polyester powder coated and sealed from dirt, water and insects with a hinged door with a shock-proof tempered glass.

Lens: Tempered Glass

LED Module: Copper plating provides high thermal transfer rate, minimizing the junction temperature of the LEDs.

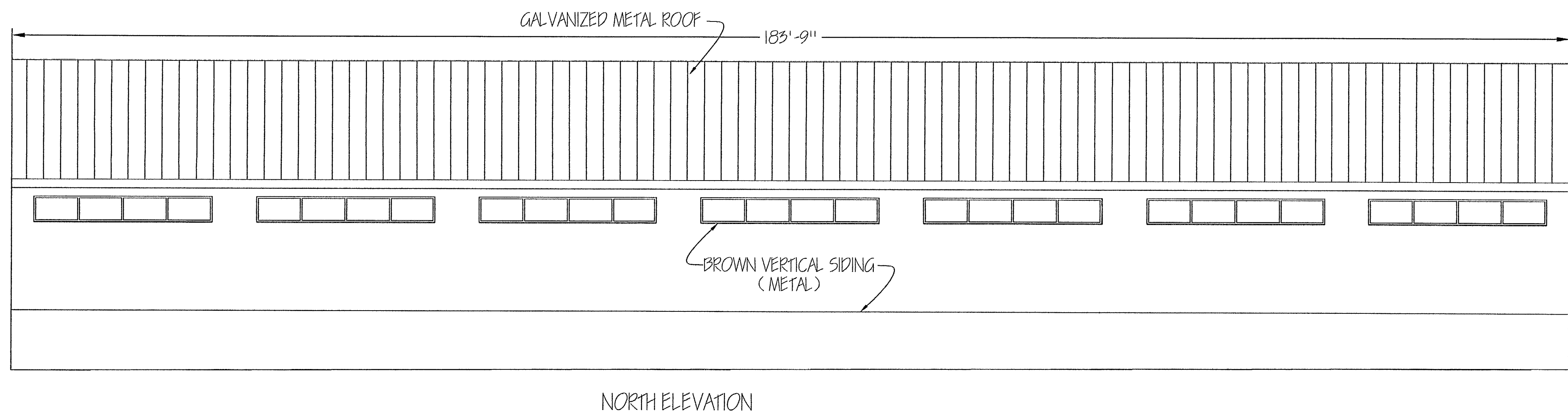
Finish: Dark bronze, white optional (consult factory for lead times)

LUMINAIRE ORDERING INFORMATION:

Watts (Max)	Order Number	Model Number	Lumens	CRF	Lamp Life (hrs)	CCT	Dimensions (LxWxH)	Weight
61	71589	MLFL70LED50	4140	67	50,000	5000	16.5" x 16.5" x 7.5"	5000
68	72032	MLFL70LED50F	5070	70	50,000	5000	16.5" x 16.5" x 7.5"	5000
101	71587	MLFL100LED50	6960	68	50,000	5000	16.5" x 16.5" x 7.5"	5000
102	72034	MLFL100LED50F	7460	69	50,000	5000	16.5" x 16.5" x 7.5"	5000
140	71585	MLFL140LED50	8400	73	50,000	5000	16.5" x 16.5" x 7.5"	5000
141	72029	MLFL140LED50F	8950	69	50,000	5000	16.5" x 16.5" x 7.5"	5000

*DLC qualified product

Patent Pending
 Lighting layouts and spacing criteria available upon request
 MaxLite®: 1-800-555-5629 | Fax: 973-244-7333 | Web: www.maxlite.com | E-mail: info@maxlite.com



NORTH ELEVATION

CONCEPTUAL ARCHITECTURAL ELEVATIONS & LIGHTING DETAIL
 OF
3rd AMENDED SITE PLAN
TOBACCO TECHNOLOGY, INC.
 600 LIBERTY ROAD, SYKESVILLE, MD. 21784
 14th ELECT. DIST. CARROLL CO., MD.
 EXISTING USE: LAB / WAREHOUSE
 PROPOSED USE: LAB / WAREHOUSE

SEE PRIOR SITE PLANS S-84-045, S-97-003, S-98-026, S-13-009

TITLE REFERENCE	OWNER/DEVELOPER
TOBACCO TECHNOLOGY, INC. L.W.S. 1855 - 850 OCTOBER 31, 1996	TOBACCO TECHNOLOGY, INC. 600 LIBERTY ROAD ELDERSBURG, MD. 21784 C/O ENERGY PLUS GROUP, INC. 3003 ALPINE DRIVE FINKSBURG, MD. 21048 410-861-5102



142 EAST MAIN STREET WESTMINSTER, MD 21157
 410-848-2040 FAX# 410-840-8387 410-876-1222
 EMAIL: RTF142@VERIZON.NET WWW.RTF-SURVEYING.COM

CHECKED BY: _____ DATE: _____
 DRAWN BY: NCC DATE: 3-17-14
 SCALE: 1" = _____ N.T.S.

RTF JOB#: 13-30 COUNTY FILE#: S-13-025 SHEET: 5 OF 5

	ENERGY PLUS GROUP, INC. 3003 ALPINE DRIVE, FINKSBURG, MD 21048	REVISIONS ROOF, SIZE DATE 3/13/14	TOBACCO TECHNOLOGY, INC. ELDERSBURG, MD 21784
		SCALE - NTS 3/13/14	NEW PRODUCTION BUILDING
	PROPOSED DEVELOPMENT PLANS	ELEVATIONS CONCEPT	